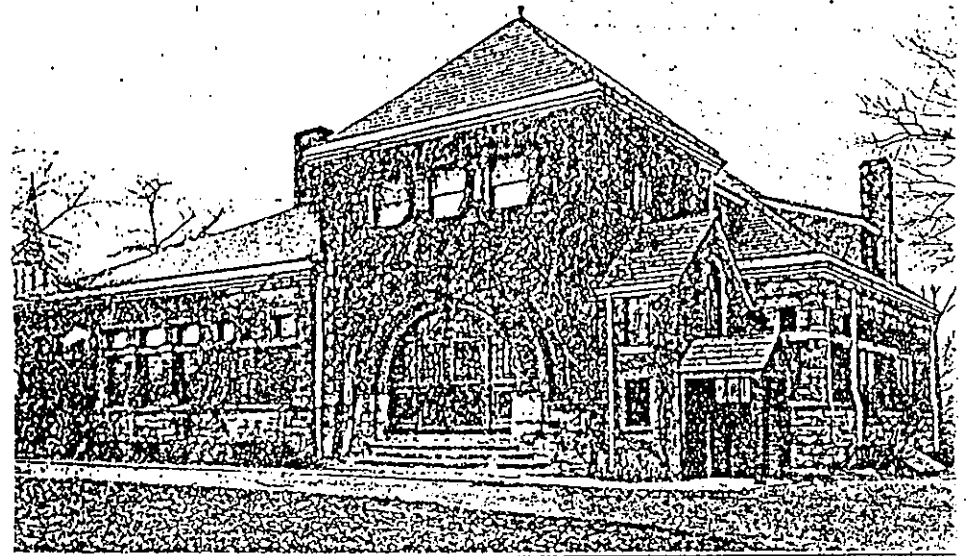


THE GLENDALE LYCEUM

YEAR END REPORT

1991



THE LYCEUM BUILDING. BUILT 1887. REMODELED 1929.

THE PRESIDENT'S REPORT

I wish to say "thank you" to you the members for extending to me this opportunity to serve you as your President. It has been a challenge, it has been rewarding, it has been depressing, but it would be best described as "fun"

I would like to thank Caroline and Terry for their service and dedication to the Club. Although we can never please all of the people all of the time, they sure try... and have come close.

I wish to thank the Board Members for their countless hours of devotion.

Jeff has kept us on the financial track all year and it feels good to say the pool expenditure will be paid off this quarter. Thanks Jeff.

Entertainment - what can be said. The year was filled with festive parties and good times were had by all that attended. Thank you Jinny.

Randol - what a year to be chairman of the pool. It looked and functioned so well. The weather was great and it all made for a great summer.

Thank you

Diane - yes it was an eventful year.. from wine tasting to Pizza with Santa.. and it was all great. Thank you Diane.

Don - your comments as to "quantity and quality" say it all. Thank you.

The President's report continued...

To the three directors who have fulfilled their three years, Ted, Sam and Joe....

Ted - who for three years has spent many hours getting our documents in order as well as keeping track of the various rentals - thank you for a job very well done.

Sam - has been chairman of sports; treasurer and this year Secretary. He has done well in all of these positions. Thank you Sam.

Joe - has handled Youth, Drama & Education; was secretary and this year was House and Grounds.

He too did well in each position. Thanks Joe.

Joe is running for a second term and we wish him well.

The financial condition of the club remains strong.

The dues, rental income and investment interest provided the necessary dollars to cover our expenditures. It is a pleasure to say that the pool as of this first quarter of 1992 is paid for. We have no outstanding debt.

The facilities are in constant need. We made repairs or purchased items where needed. For example, the floors were refinished; the paddle tennis decks also were refinished; we bought a new roller for the tennis courts; a pump and hose for the pool. We installed a better system for

President's report continued....

disposing of our trash; and a bigger and better ice machine and made countless minor repairs throughout the club. Needless to say this is an ongoing problem, and despite our many repairs and replacements there will be more and different items requiring attention in 1992.

The social and sports calendar can be best described as "quantity and quality". Thanks go to the many members who gave their time and effort to the different events, so that we, the members, could have a good time.

To summarize - I have enjoyed this year and trust that we have pleased you.

Thank you.

Ken Bockenstette
President.

THE SECRETARY'S MEMBERSHIP REPORT FOR 1991

Roland W. Richardson helped shape the Lyceum over most of its 109-year history. This gentle patriarch of our Lyceum three times elected a director, twice elected President by the Board, remembered for his Stunt Night appearances as one of the three little pigs, passed away last summer at 94 years of age. We shall miss him.

In 1991 we also lost two of the Lyceum's and Greater Cincinnati's legendary tennis stars: George W. Gray and John M McCaslin, Jr. These men not only created a standard of good play and good sportsmanship, but were past directors and Presidents of the Lyceum. We also salute them. Nancy Gruber, who directed and inspired a number of dramatic club productions, and whose absence has somehow cast a spell of non-direction to the Dramatic Club, also passed away in 1991. Nancy was joined by Mary Knecht and Dolores Huff who had died earlier in the year and by Larry Oancea who died just before Christmas.

We remember these good people with thanks and affection and we extend our sympathy to their families.

As we enter the 110th year of the Lyceum, the

Secretary's Report continued...

membership rolls are in a very strong condition. We have 22 new senior members plus their children. We have six new special members and one new honorary member. Altogether, the membership of the Lyceum as of December 31st, 1991 was 598 comprised of the following:

- 340 Senior Members
- 65 Junior Members
- 45 Sub-Junior Members
- 126 Children Members
- 6 Student Members
- 10 Special/Honorary Members
- 6 Out-of-Town Members

Sam Allen
Secretary.

AUDIT, BY-LAWS and CALENDAR

The Lyceum continues to be a popular place, not only for Lyceum functions but also as a place for private parties in both Member and Member Sponsored categories.

During 1991 Rentals were as follows:-

Member	18
Member Sponsored	17
Business	2
Glendale Clubs	2

We have a substantial number of reservations in hand for 1992 extending late into the year. An increase in the rate for Member-Sponsored rental put into effect in June has had no adverse impact on bookings.

The Members' Handbook which includes Rules and Regulations and a Membership list was updated and reprinted in September and mailed to members. As noted in last year's report up-to-date copies of the Constitution and By-Laws are available on request in the Lyceum office.

Ted Carman
Audit, By-Laws & Calendar.

ENTERTAINMENT

In 1991 The Lyceum provided club members with five parties. We hope you were able to participate in these events. We welcome any suggestions from the membership for additions or improvements to our entertainment.

The Spring Dance was held on April 27th. The theme was a Parisian Cafe complete with choice wines, French bread, souffles, omelettes, crepes fruit fondue, cherries jubilee and espresso coffee. The decorations were all done in a French motif complete with fresh flowers.

The band Slick as a Whistle provided music for dancing. It was truly a magnificent evening. The committee consisted of Jay & Carolyn Antenen; Jose & Maureen Berger; Bob & Helene Gruber; Joe & Cathy Hubbard; Bob & Jane Johnson and Bev & Connie Tucker. 130 guests were present.

Memorial Day was a very patriotic day with the theme being Operation Memorial Day - A Salute to the Troops. The committee dressed in desert camouflage fatigues. At 4:00 pm there was a Bicycle, stroller & wagon parade followed by fun on the lawn games. Dinner consisted of chicken & ribs, potatoes, corn on the cob,

Entertainment Report continued...

coleslaw, biscuits & gravy with apple crisp and ice cream.

Navy Grog was served in the Officers' Club in the summer house pavillion.

1940s music was played during dinner and a Sing-a-long followed.

This picnic was a huge success. 218 adults and children were present. The committee was headed by Janet & Andy Todd; and consisted of Meegan & Peter Baxter; Candy & Bob Caress; Jenny & Kurt Heusner; Jennifer & Gregg Findlay; Jane & Jeff Jackson and Marianne & David Montgomery. The July 4th's theme was a Beach Party.

Participants were asked to dress in red, white and blue. We had 230 members attend this super well planned picnic. The tennis finals were played earlier in the day and a classic car show and judging were held in the afternoon. Childrens' activities included sand castle building and as darkness approached members enjoyed a wonderful fireworks display. Many thanks go to Bill Carruthers and his men for all their hard work with the fireworks.

The 4th of July dinner consisted of Honey Baked Ham, salad bar; baked beans; scalloped potatoes; and Strawberry Shortcake.

Entertainment Report continued...

Paula & Michael Scudder chaired this event with their committee Sue & Ed Hesse; Kelly & Al Hoengenga Peggy & Gary Johns; Mary & Don Lofty; Vikki & Roger Nutter and Rebecca & Delain Wright.

Our Labor Day Picnic was a seashore party at Port Lyceum. 218 members and guests attended.

Cocktails & Sea Critters were served while the children had games and later entertained the membership by singing the songs from The Little mermaid. Dinner was grilled chicken, corn pudding, potato salad; black bean salad; cakes and watermelon. It was a fabulous evening and

harras go to chairpersons Gayle & Gordon Kwiecinski and their committee Jack & Joan Greene; Jancy & Randy Green; Sue & Jim Worachek; Carol & Bill Faulkner and Sandy & Peter Chronis.

"Shimmey" was the password for entering the Lyceum Speakeasy on New Years Eve and we were greeted by a bathtub filled with spirits in the foyer.

A Prohibition Murder Mystery Party was part of the evenings entertainment. Our members were the cast and did a splendid job.

Entertainment Report continued...

Cocktails were followed by dinner and dancing began at 9:00 pm. the music was by Just in Time. A wonderful evening of fun and dancing were enjoyed by 104 guests.

Many thanks go to Jean & Joe Rohling and their committee Peg & Duff Shardelow; Bobbie & Andrew Stringfellow; Barb & Brian Clipson; Marily & Jack Didrichsen and Donna & Karl Davis.

Jinny Halbauer
Entertainment.



HOUSE AND GROUNDS REPORT

Our beautification, refurbishing, and restoration programs continued through 1991 in our efforts to keep the Glendale Lyceum a very attractive and pleasant setting for our social, dramatic and sporting functions.

Heading the list for our '91 improvements was the refinishing of our hardwood flooring in the ball room, sun room, tea room and stage and the entrance to the library. To compliment the beauty of our "new floors" Terry Hodge, our custodian, did a great job cleaning the stone floor in the entrance hall and on the stairs to the front side door. Another area which prompted many compliments was the planting of several flower beds. These beds were located along the border of the semi-circular drive in front of the Lyceum, along the drive to the parking lot and at the pool. We owe our thanks to Arlene Howeler and Fran Hall for this mighty effort. They put in many hours of toil and sweat to give us a beautiful entrance and pool area. We constructed a new loading dock at the kitchen, broadened the driveway, and installed a new dumpster area complete with concrete base pad which should give us many years of service. We also added.

P O O L R E P O R T

House and Grounds Report continued....

several sizable blacktop patches to our drive and parking lot which should help prolong their usefulness.

We have made arrangements for a new hedge along the north border of the parking lot, and we replaced several trees and shrubs which didn't survive the dry summer.

Last but not least, coming next spring will be a new awning for the porch. Broad green and white stripes will replace the old yellow and white awning. We are told that this awning will last until the next millennium.

As always, your comments related to desired improvements to our facility are most welcome.

Joe Hall
House & Grounds.



The 1991 season at the Lyceum pool was terrific. There were no major injuries, the pool has never before been enjoyed by so many, the water clarity and chemical balance were good, and our two guards Margy Porter and Lisa Steltenpohl were fabulous. Basically our children behaved well and there was virtually no malicious destruction.

The pool was in start-up condition by mid-May. The only hitch was that we did have to replace the antiquated baby pool pump. We actually opened on schedule the Saturday of Memorial Day weekend - a beautiful day and a beautiful beginning. Margy Porter, our star lifeguard of the past two years, accepted the responsibility of pool manager as well as guard. She was in charge of everything from maintenance and chemicals to filling the pop machine, and she did a fantastic job. I cannot overstate what a positive move it was to have her as the manager. Her compensation for this position was worth every penny.

We did have a problem with the other guard whom we initially hired. She simply did not respond quickly or appropriately in several instances. We dismissed her in late June and were fortunate enough to hire Lisa Steltenpohl, a friend of Margy.

Pool Report continued...

The two girls worked as a smooth team for the rest of the summer. Children and parents alike were very pleased.

There were weekly game days for the children, the now famous Polar Bear Dip on July 4th, which required a second trip to Dunkin Donuts before dawn; several Ladies' Luncheons, and several weekend parties. In addition, a record hot summer meant that the pool got especially heavy use just for cooling off and recreation.

Since the young population of our membership seems to be rapidly increasing, and since most of these little folk seem to enjoy the pool, I recommend that we hire a third guard next year to keep the other two from dropping from exhaustion. Super heavy traffic time seems to be from Memorial Day through July 4th.

Many thanks to Fran Hall and Arleen Hoeweler for their hard work which produced the beautiful flower beds in the pool area. The combination of the pretty plantings and the crystal clear water in our beautifully rebuilt pool made the whole environment especially pleasing.

After Labor Day the pool was drained and some seam repair work on the lining was done. We decided

Pool Report continued....

to leave the pool empty to see how start-up from empty next May compares with the start-up we had this year when the pool had been left full all the previous winter.

At this writing we are expecting to replace the ailing and antiquated filters with new ones which will be installed by Shamrock. By ordering them before the end of the calendar year we will benefit from an off-season discount.

Randol Ringo
Pool Chairman.



THE SPORTS REPORT

The tennis season opened in grand fashion with new lines and the usual coating of fresh Tennaco. Despite problems with the always-tempermental sprinkler system enthusiasm and participation ran high.

This is especially true of the youth tennis players, such as Michael Kooris, Courtney Caress and Betsy VeVerka who are competitive on a city/regional basis and provide inspiration for developing players.

Our girls interclub team won the City Championship and our boys team was competitive despite a low number of older players.

The focal point of the season as always was the 4th of July Tournament. Thanks to the work of Steve Geary and Will Sawyer, the Tournament ran smoothly and the competition was at a high level both in quantity and quality.

A few weeks later, Ed Hartwig did his usual fine job of running the Senior Men's Invitational. The draw included the best players from several states and those who attended the semifinals and finals saw the sport at its finest.

Finally, Labor Day brought the Parent-Child Tournament run by Candi Caress and Linda Morgenroth.

Players participated in three levels according to age and ability.

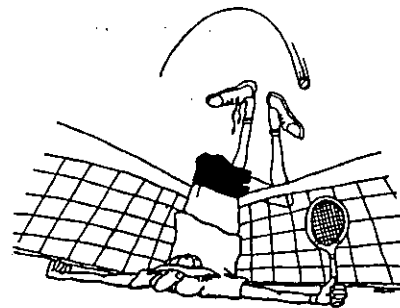
Sport Report continued....

Before leaving summer, I must mention the surge (OK, spurt !) of interest in volleyball. On several Sunday afternoons a group of couples, led by the Ewings, played until their backs and legs gave out and then sat down to a Pot Luck dinner.

With fall came the paddle season and our two resurfaced courts. Once again, Glendale has two men's A teams and one men's B team, and one each women's A and B teams.

Youth paddle continues to develop with Father-Son and Mother-Daughter round robins in the fall and the Menzel Tournament in the spring. Each year more young players participate in these events, and the quality of play improves.

Finally, once again, the Jacksons and Kooris' will run the Club Championship in March. Participation in paddle is growing this year and we are expecting a highly competitive and enjoyable event.



Don Lofty
Sports Chairman.

YOUTH, EDUCATION & DRAMA

This has been a very eventful and diverse 1991 for Youth, Education and Drama. I appreciate all the time and energy put into each and every event from the Lyceum members.

We started out with an evening of Wine Tasting with great success, our hosts were Gaie and Roy Benecchi and Cindy and Larry Youse. The Annual Easter Egg Hunt chaired by Meegan & Peter Baxter was creative and festive for all the children that attended. Our Easter Bunny once again made an appearance at the event.

We found out at the Mother's Day Brunch we have very talented children in our club. They put on a spectacular performance for our Mothers. A big thank you to Becky Edwards, Nancy Green, Joan Greene and all the committee. This was an event we will all remember.

A new program which we started was our Arm Chair Evenings. The first evening was a tailgate dinner and football conversation with Bob Johnson our football expert. Thank you goes to Lisa and Rick Spaulding for organizing this fun night.

We then had an armchair evening of travel featuring Doreen and Bob Gove's beautiful slide presentation of their trip through New Zealand. Jean Matthews and her committee did the serving and clearing

Youth, Education and Drama continued....

of the delicious dinner. Thank you again.

Our holiday events, Pizza with Santa and the Cookie Exchange again were celebrated.

Our children and grandchildren again enjoyed pizza under the watchful eye of Linda Moravec and Mr Claus. Thank you both for helping to get us into the Christmas spirit.

The Cookie Exchange hosted by Kathy Stegman is an event a lot of us enjoy, and Wick and Marlin Ach's beautiful Christmas Tree certainly adds to the spectacle of colorful cookies and christmas gaiety.

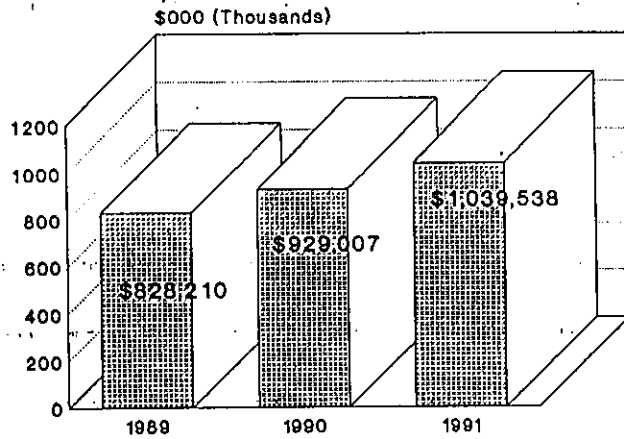
Our Bridge Club still thrives and continues to meet the first and third Tuesday of each month. A Trophy is awarded to the overall winner. This is announced at the Annual Meeting.

The revival of the Dramatic Club is on its way with a spring production of Steel Magnolias. Our club has many talented people and this is the time to get involved and support the Dramatic Club. Mark your calendars for April 3rd & 4th and sign up to help any way you can.

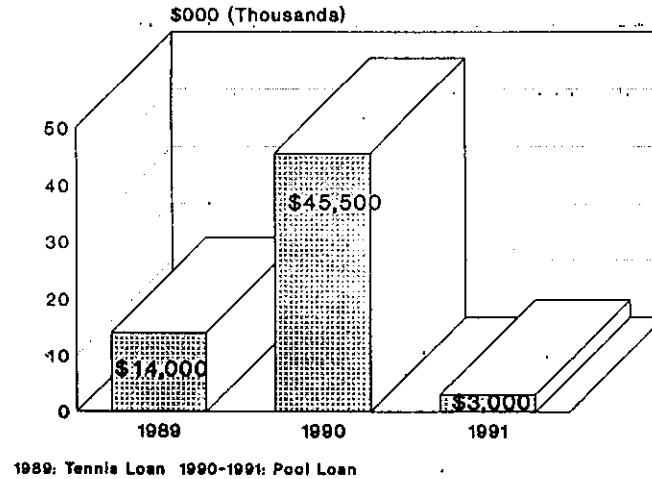


Diane Limbocker
Youth, Education & Drama.

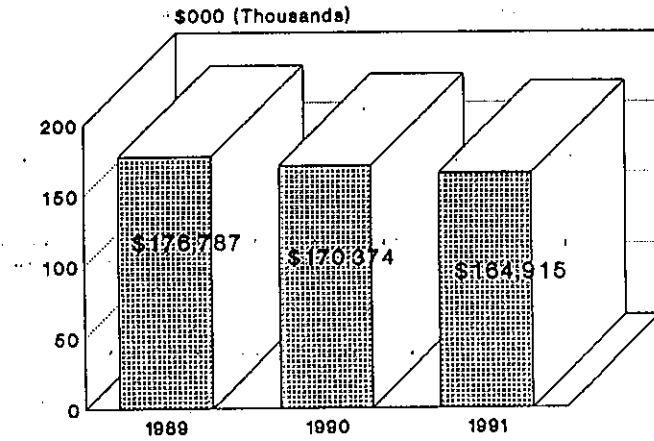
TOTAL CURRENT ASSETS Glendale Lyceum



TOTAL LIABILITIES Glendale Lyceum

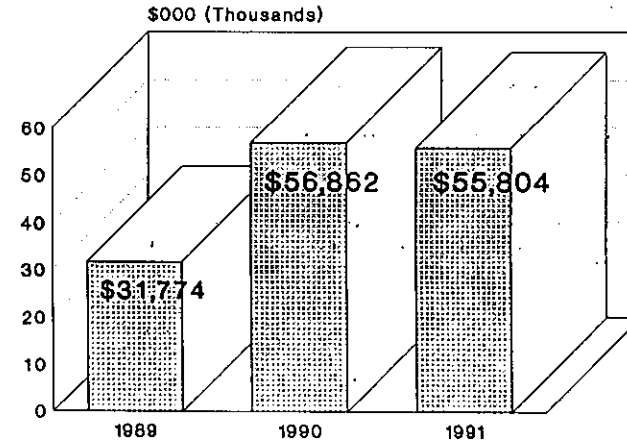


TOTAL ANNUAL INCOME Glendale Lyceum



Net of direct expenses and Pool Fund

EARNINGS BEFORE TAX Glendale Lyceum



Balance Sheet
December 31, 1991

A S S E T S

Current Assets:

Cash - Central Trust	1,982
Cash - Pool Fund	952
Money Funds - Prud. Bache	305
Investment - CDs at Cost	50,000
Investment - P & G Stock at Market	775,449
Investment - Treas. Notes PB at Cost	206,510
Prepaid Insurance	4,340
Total current assets	<u>1,039,538</u>

Fixed assets at cost:

Land	50,000
Building	112,000
Improvements to Building	164,614
Other Improvements	30,464
Improvements to Pool	87,252
Equipment	3,640

	<u>447,970</u>
Less accumulated depreciation	211,356
	<u>236,614</u>
	<u>1,276,152</u>

LIABILITIES AND MEMBERS' EQUITY

Current liabilities:

Loan - Central Trust Pool	3,000
Total current liabilities	<u>3,000</u>
Unrealized Gain on P & G	201,379

Members' Equity:

Members' Equity	1,022,401
Profit (loss) for period	49,368
Rounding	4
Total Members' Equity	<u>1,071,769</u>
	<u>1,276,152</u>

Jeff Jackson
Treasurer.