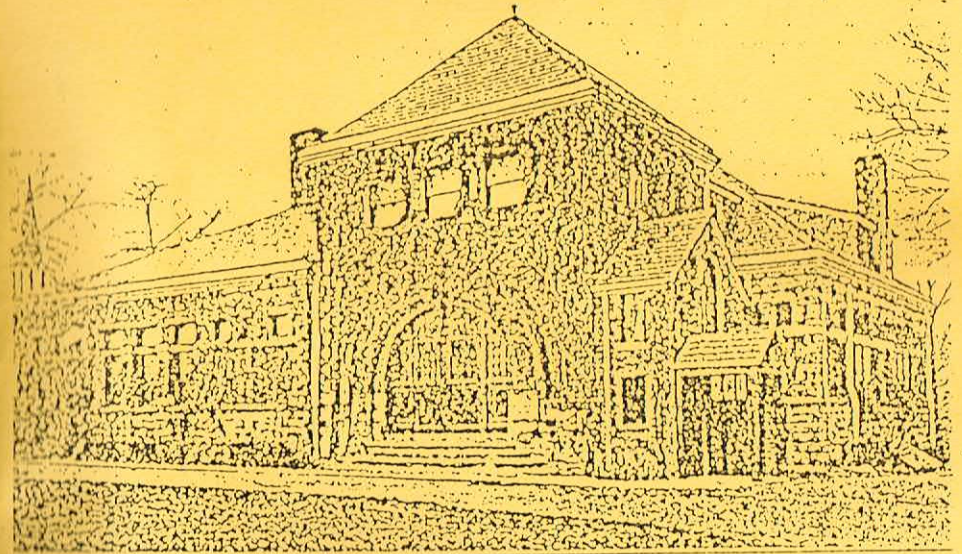


THE GLENDALE LYCEUM

YEAR END REPORT

1992



THE LYCEUM BUILDING. BUILT 1887. REMODELED 1929.

GLENDALE LYCEUM

Officers and Board of Directors

1992

Joseph Hall	President
Jeff Jackson	1st Vice President Treasurer
Don Lofty	2nd Vice President Secretary
Randol Ringo	Audit, ByLaws & Calendar
Diane Limbocker	Entertainment
Ken Bockenstette	House & Grounds
Fred Pfirrmann	Pool
Andrew Todd	Sports
Virginia Halbauer	Youth, Drama & Education

A MESSAGE FROM YOUR PRESIDENT:

1992 will be remembered as a year when many of our changes and improvements were in the form of measures taken to strengthen and solidify our financial position. For too many years, the day-to-day operations of the Lyceum have been funded, to an ever increasing degree, by our endowment. The Board felt very strongly that this situation was one that was not in keeping with wise stewardship responsibilities; and that in representing the best interests of the membership, it was important that we make every effort to carefully control expenses and, at the same time, modestly increase the dues. This would allow us to cover our operating expenses from our dues and income structure and to use our endowment for improvements and capital expenditures. A full discussion of this development was presented at our annual meeting by our very capable treasurer, Jeff Jackson.

Additionally, the Board established a bond ladder of \$250K with \$50K maturing each year in a cycle of five years. We also established a roof fund setting aside \$2,000 each quarter in order to be able to pay for a replacement roof, when the need arises, without the need for another dues increase or assessment.

President's report continued....

In the area of physically noticeable improvements we installed the new awning, purchased much needed silverware, tuckpointed the brickwork of our entire structure, and completed numerous beautification projects to the Lyceum grounds. There were other less noticeable, but equally important projects like the new pumps for the pool and repair of some termite damage in the basement.

I'd like to extend a heartfelt thanks to all the Board members who so selflessly gave of their time over the course of the year. It was very gratifying to me to work with a Board which demonstrated such care and concern for The Lyceum, wanting to make it and keep it the very best that it can possibly be. I would also like to thank the many who served as Committee Members for our social functions, the organizers for our sporting events, and the moms who were drivers for our interclub tennis teams. And lastly, thanks would not be complete without an acknowledgement of the enthusiasm, initiative and job well done by Caroline, our Administrator, and Terry our Custodian.

It has been a great privilege and a pleasure for me to serve as your President this past year.

Joseph Hall
President

SECRETARY'S REPORT

As of December 31st membership stood at 663 of whom 432 were adults and 231 were children. This is consistent with years past with resignations and non-step-ups about equally balanced by initiations of new members and reinstatements of former members. New members this year were:

Jim and Donna Wesselman
children: Hannah & Samuel
Taylor and Leanne Rosenfeld
children: Zach, Ricky & Jacob
Mrs Gladys Mees
Christopher and Iris Kelsen
children: Matthew & Jennifer
John and Anne Viall
children: Sarah, Emily, Abby & Seth
Craif and Barbara Wolf
child: Keren
Mrs Sherrin Knecht
Mrs Ruth O'Dell
Kenneth and Sandy Palmer
child: Katherine
Mr Robert Dalton

If you have not already done so, please look for these people at the Lyceum events and welcome them to the club. We would also like to welcome six of our youngest members:

Henry Werrell
Brook Skyllingstad
Taylor Todd
Rachael Montgomery
Andrew Heusner
Lauren Oancea

AUDIT, BY-LAWS and CALENDAR

All were born in 1992 and we look forward to many years of membership with them.

Unfortunately we must also note with sadness the passing of four members in 1992. Jerry Beischel, whose gentle, fun-loving spirit was taken from us in a swimming accident last summer. Also three other members succumbed to illness last year: Sterling Murray, Henry Woods and Robert Muhlhauser. We shall miss them all.

Donald Lofty
Secretary.

The Lyceum continues to be a popular place, not only for Lyceum functions but also as a place for private parties in both Member and Member-Sponsored categories. Rentals show a significant increase over the last year. During 1992 rentals were as follows:

Member	35
Member-Sponsored	21
Glendale Clubs	4

We have a substantial number of reservations in hand for 1993 extending late into the year.

We accept bookings one year in advance.

The Lyceum Standing Rules, which are included in the Members' Handbook, have two new amendments. They are as follows:

Out of Town Status is defined as outside Hamilton and Butler Counties.

Married persons may belong to the Lyceum only under a "Couple" Membership. In the event that a Single Member marries, a new initiation fee (equal to the difference between a Single and a Couple Membership) will be charged for his/her spouse.

ENTERTAINMENT REPORT

Up-to-date copies of the Constitution and By-Laws are available upon request from the Lyceum office. The Lyceum's safety deposit box has been checked and it's contents are in order.

Randol Ringo
Chairman of Audit, By-Laws and Calendar.

The entertainment for 1992 was innovative and energetic. We had a successful year due to many of you who help decorate, clean-up and attend. We tried a few new ideas this year which were responded to in a very positive manner. I thank everyone for their talents and ideas.

Our first function was the Spring Dance held on May Day. Marianne and Ted Miller chaired this event. Their tireless efforts paid off by beautiful decorations, excellent food and the people that attended had a lovely evening. The Memorial Day Picnic's time was changed to noon and was very well received. Vikki and Roger Nutter with their committee tried something new and everyone had a wonderful time. This idea of a noon picnic may continue because of it's popularity this year. Caroline and John Schiff single handedly ran the 4th of July Picnic. A great success for their first event and all that came had a full day of tennis, food and fun. Our gratitude once again goes to Bill Carruthers for the firework display.



LYCEUM POOL REPORT

The Labor Day Picnic chaired by Helene and Bob Gruber ended up our summer. Once again this picnic was at noon and despite the dreary weather the picnic was well attended and fun was had by all. New Year's Eve was truly an evening of elegance. The food was delicious, the orchestra entertaining and the leadership of Candi Ryan and her committee deserve a great deal of thanks. They not only set-up and decorated, they served the dinner and dessert. Six of our younger members worked very hard in assisting with the serving. I thank everyone for their efforts. Entertainment is a benefit to the Glendale Lyceum and should be supported to continue all these functions. When you are called upon please consider all the enjoyment you have had over the years at these events and sign-up to help.

Diane Limbocker
Chairman of Entertainment.



Spring has gone, Summer has gone, Fall has gone, Winter is almost gone, and so is my job! The old green pool in the back yard lasted one more year.

Our biggest problem was with the water level. Somewhere the pool sprung a leak. This caused an excess use of water and chemicals. By the skillful help we were able to survive the problem. We are hopeful that the pool is now repaired and will not leak again.

The life guarding was satisfactory and no major mishaps occurred. In order to have better life guarding I would recommend that three life guards be hired next year. This would allow for better coverage during heavy usage, and allow time off for vacations. Year end bonus' should be based on their attendance and responsibility to their job.

The most difficult problem is to police non-member use of the pool. Some non-members are residence of the village and are brought to the pool by members. We asked that all parents remind their children that the rules are for all of us to obey. As out going chairman I ask all the members to help over see the attendance at the pool. It is very difficult for the life guards to know every member.

SPORTS REPORT

In conclusion I thank you for the cooperation you gave to Terry Hodge and my team of life guards and for the efforts you put into making the pool as nice as it has been.

It was my pleasure to have run the pool under budget.

Frederick Pfirrmann
Pool Chairman



The 1992 Tennis Season opened with a new look. A green and white owning replaced the old faded yellow and white one; new interclub uniforms graced the girls and boys teams (this was done so we wouldn't have to enforce the dress code rule) and the tennis courts opened in mid-april having been professionally prepared. Our new Tennis Pro. Tony Brock was a huge success !! With the courts opening up much sooner than expected, Tony took advantage and began running after-school clinics for the girls and boys. These clinics were highly attended by all levels of players and as the summer went on the ability of players increased dramatically. As we got closer to the big tournament adult clinics and individual lessons increased providing us with one of the most competitive tournaments in years. Super Chairman Ed Hartwig and chairwoman Cindy Halbauer ran a flawless 4th of July Tournament. Congratulations to them and all who participated. This tournament grows every year and is a great way to meet new members.

July 17th was the start of the Senior Mens' Invitational. Top players from several states participated in this weekend event. Rain played havoc with the schedule and eventually the finals were played the following weekend. Super Chairman Ed Hartwig, participated and ran this exciting Tournament. Thanks Ed.

As the weather changed from hot to cold people began hearing the sound of hot paddle balls smacking racquets and screens. The courts are in great shape, thanks to Don Lofty (past sports chairman) and ready for action.

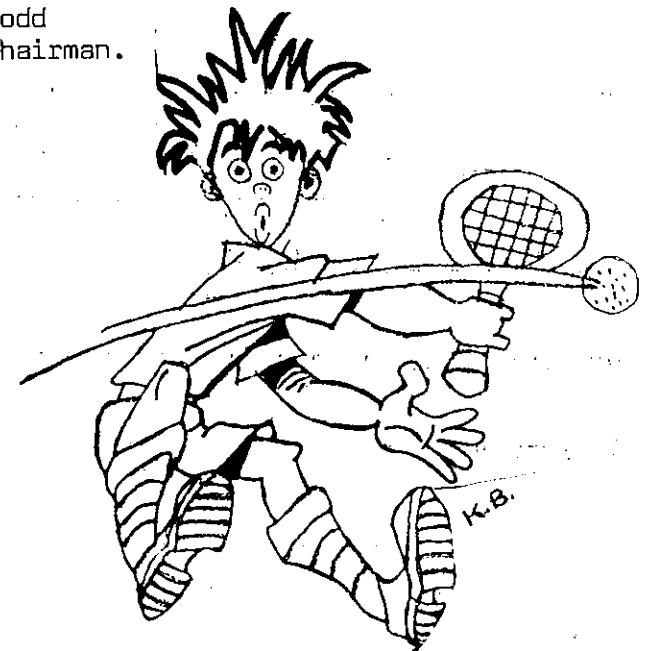
Novice paddle clinics and the Annual Paddle Party opened the season in grand fashion with many new faces and old. The Lyceum has alot of Glendale participation in the city interclub league. Two mens A teams and one mens B team and the women have both an A and B team.

The Father and Son; and Mother and Daughter tournaments were run in January with many participants. Thanks to Bob Kooris and Jody Skowronek for organizing these events.

The club championship will have a different format this year. The womens doubles tournament will be played on Friday night, the mixed doubles on Saturday with a social gathering in the evening.

Sunday will bring the men's doubles. All finals will be played on Sunday, with the exception of Mixed Doubles. the Tournament will come to a conclusion with the famous Margarita Banquet - were Joe Green will tell his famous tales and present the trophies. 1992 was a successful year for Lyceum sports and 1993 will be even more exciting. Thank you for your participation.

Andrew Todd
Sports Chairman.



YOUTH, EDUCATION and DRAMA

The Annual Easter Egg Hunt was chaired by Connie McCaslin. Since there is no sign-up for this it is difficult to determine how many children attended. However, it was well attended and well worth having done for the children.

It rained and the little ones were allowed to find treats in the library and ballroom and the older ones found their treats in the basement.

Bill Boughton was the Easter Bunny.

Mothers' Day Brunch was well attended with 102 adults and 45 children. Cindy Halbauer catered and we were entertained by our children singing and performing under the direction of Nancy Green.

Photographer John Payne was in attendance and available for family portraits on this special day.

Breakfast with Santa was chaired by Arleen Hoeweler and Marlin Ach. A total of 84 children and 77 adults attended this wonderful and magical event.

Riley's of Greenhills catered and a Magic Show was put on by Tom Bemmes.

Santa was assisted by Kassy Ach, Jenny Hoeweler, Katie Jackson, Katie Sanders, Jennifer Worachek, Devon Skyllingstad and Kim Kuresman.

Christmas Caroling and The Cookie Exchange were combined this year. Caroling around the piano in the library and drinks and dessert were served. Forty-five members and guests attended this function.

The event was chaired by Rnady and Nancy Green, Jim and Sue Worachek and Keith Miller and Karen Ifert.

Bridge is continuing. Regular bridge is ongoing the first and third Wednesdays and the lessons are in the second session.

The winner of the Bridge Trophy for 1992 was Bob VeVerka.

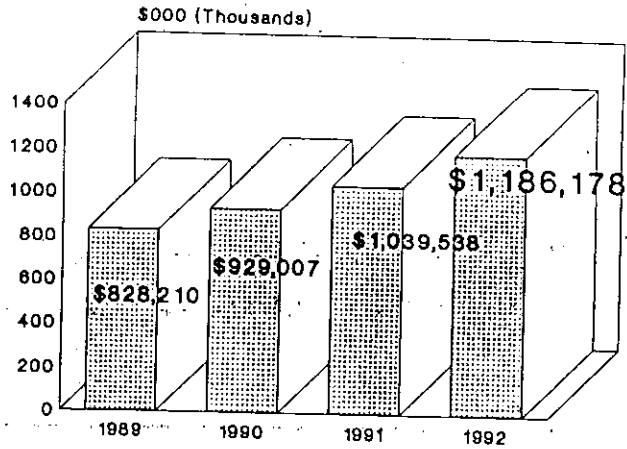
Unfortunately the Dramatic Club has not been active this year due to lack of participation.

It is hoped that both old and new members will again make this a strong group. We have many talented members and hopefully 1993 will see a higher level of participation.

Virginia Halbauer
Chairman of Youth, Education & Drama.

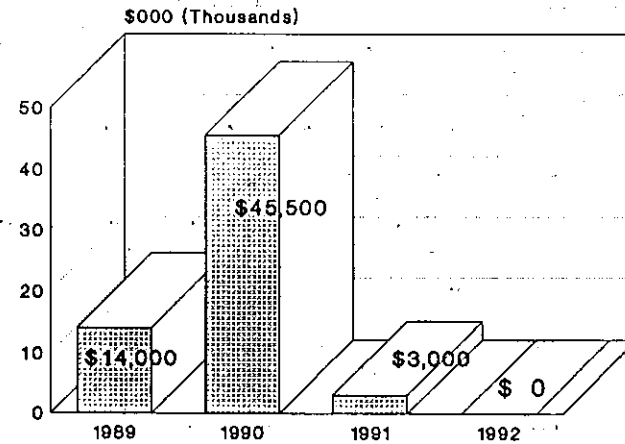
TOTAL CURRENT ASSETS

Glendale Lyceum



TOTAL LIABILITIES

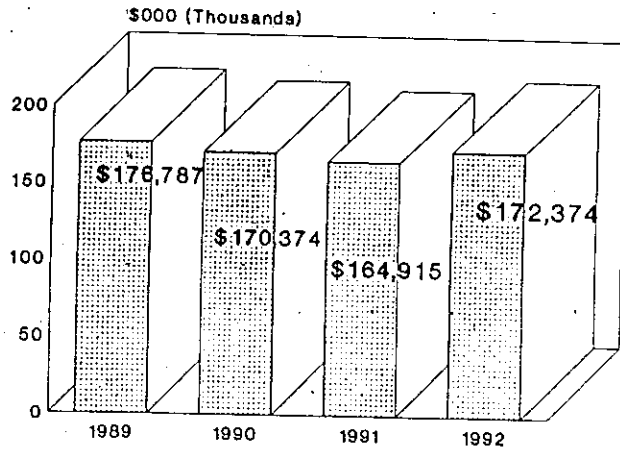
Glendale Lyceum



1989: Tennis Loan 1990-1991: Pool Loan

TOTAL ANNUAL INCOME

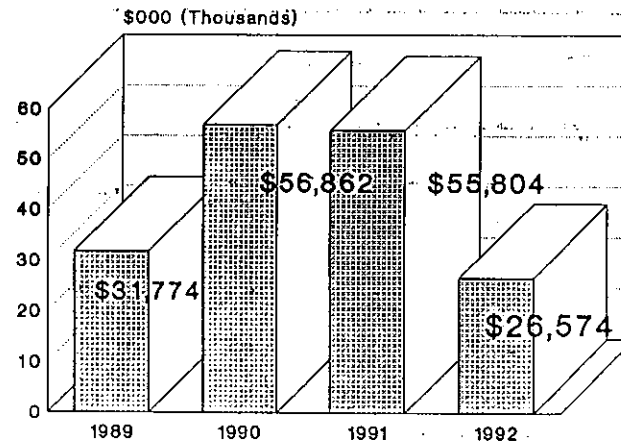
Glendale Lyceum



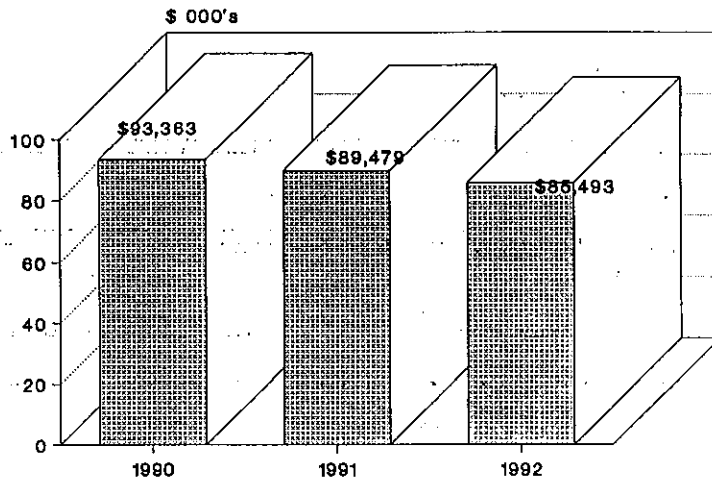
Net of Direct Expenses and Pool Fund

EARNINGS BEFORE TAX

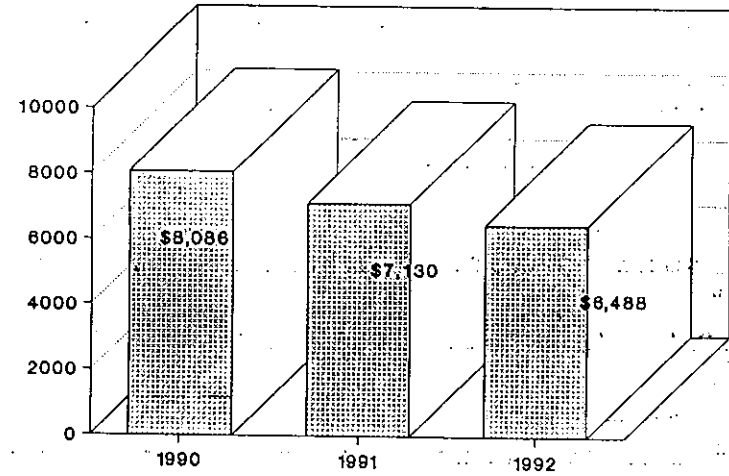
Glendale Lyceum



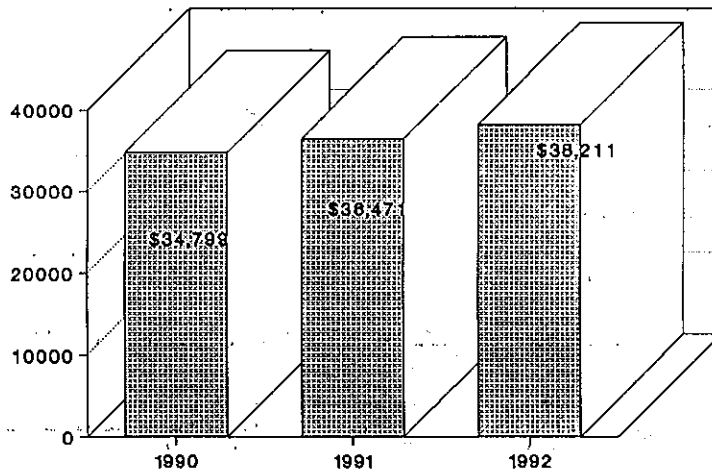
Revenue From Dues



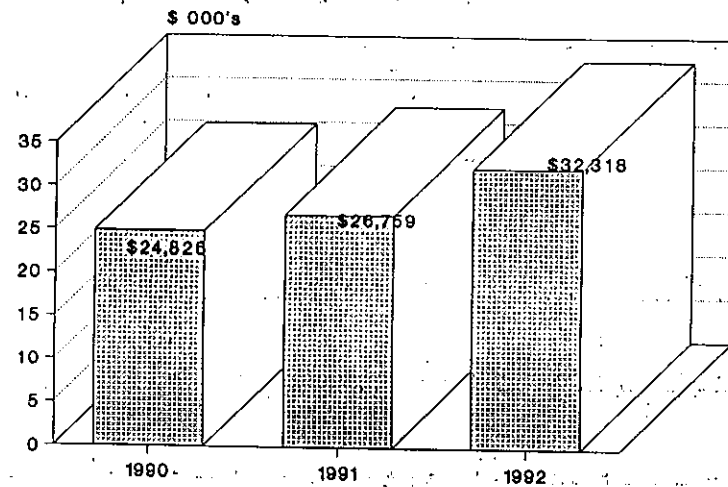
Net Member Rental Income



Endowment Income



Net Rental Income



Jeffery Jackson
Treasurer.

HOUSE and GROUNDS REPORT

Our beautification, refurbishing and restoration programs continued through 1992 in our effort to keep the Glendale Lyceum a very attractive and pleasant setting for our social, dramatic and sporting functions.

Much effort was put into upgrading the appearance around the parking lot. New flowering bushes were planted along the north edge and in the spring will bloom. The tall bushes at the corner were reduced considerably in height, thus eliminating a sight barrier for the cars backing out of the first few parking spaces. As this opening up the area, we ran a water line from inside the building under the driveway and now have a hose bib in the garden. As this garden is a focal point for all cars entering and leaving the premises, we added a trellis with seats and a walking path for all to enjoy. We also ran a water line to the front of the portico. The purpose of such lines, in addition to getting water to the flowers, is to eliminate having to have hoses laying around which tend to be a safety hazard.

Painting was another priority. The play equipment and all picnic tables were given two coats of water seal.

For the benefit of our parties both by members and non-member rentals new silverware was purchased.

Presently we are having the main building "tuck pointed". This with the repairs to the down spouts will keep the water from seeping in. When this portion of the project is completed we will be addressing some water damage which has occurred in the basement.

As always your comments related to desired improvements to our facility are most welcome.

Ken Bockenstette
House & Grounds.