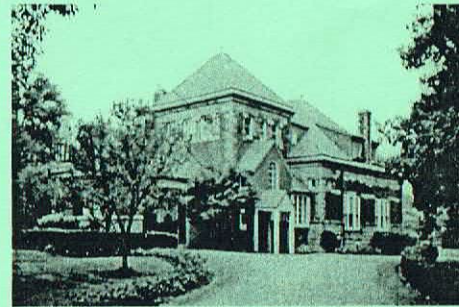


Annual Report
THE GLENDALE LYCEUM



2000

**The 2000
Board Of Directors**

President	Rodger Brown
1st Vice President and Sports	Joe Green
2nd Vice President and House and Grounds	Rick Spaulding
Audit, By-Laws and Calendar	Angie Larimer
Entertainment	Bizzy Goldman
Pool	Carol Faulkner
Secretary	Chuck Poston
Treasurer	Duff Shardelow
Youth, Education and Drama	Candi Caress

This booklet was prepared for use of the Glendale Lyceum membership only.

©January 2001
The Glendale Lyceum
865 Congress Avenue
Glendale, Ohio 45246

The President's Report

Table of Contents

<i>The 2000 Board of Directors</i>	3
<i>Table of Contents</i>	4
<i>President's Report</i>	5
<i>Treasurer's Report</i>	7
<i>Secretary's Report</i>	11
<i>Audit, By-Law and Calendar Report</i>	13
<i>Entertainment Report</i>	14
<i>House and Grounds Report</i>	16
<i>Pool Report</i>	19
<i>Sports Report</i>	21
<i>Youth, Education and Drama Report</i>	24

It has been my pleasure to serve you as President of the Glendale Lyceum for the year 2000. The year was personally both challenging and rewarding and it is my hope that the membership feels it was well-served by this Board over the past year.

In my first President's Corner column, in the February 2000 issue of The Forum, I listed several goals the Board hoped to accomplish over the year. I am pleased to report that, for the most part, we were successful in achieving these goals. First, we wanted to increase our membership, which we did by adding a total of 26 new members to bring our total membership to 613. These new members and their families bring a wide range of interests, ideas, talents and energy to our club. We continue to seek new members to add to the vitality of our club.

Another goal was to introduce a line of Lyceum logo sportswear, which was accomplished by providing various styles of summer shirts, and more recently, a fleece winter vest.

A third goal, inauguration of a Lyceum web site fell victim to the drop in value of our P & G stock. Due to the drop in value of our stock in March, any immediate ideas of a sale of stock to help fund capital improvements were put on hold. Several hoped-for capital improvements were affected, including resurfacing the parking lot, improving the acoustics of the ballroom and improving handicap access to our facility. Therefore, except for a stock sale, which was approved in late 1999 by the previous Board, no additional stock was sold in 2000.

I was very pleased that 2000 saw a big increase in overall membership activity in the club. A great deal of credit for this goes to the new Forum format, developed by Lynn Murray and put together each month by Jane. The new format, easier to read and more informative, increased awareness of club activities leading to greater participation. As an example of increased member participation, the resurgent Drama Club put on two major productions, with over 125 members involved in the production of the hugely successful "Carnival." Then, "Christmas With Anton" involved more members and was very special, since it was written by

our Joe "Anton" D'Amato himself. Events like these give us all a very special sense of pride in our club and a greater understanding of just what the Glendale Lyceum is all about. Summer of 2000 also saw the initiation of our informal TGIF parties, very successful and another means for people, who may or may not see each other frequently, to get together.

In summary, it has been my honor and privilege to have served as your President. I wish to thank the entire Board for their support, assistance and hard work, each Board member putting in countless hours, making my job easy and enjoyable. Special thanks go to Judy, Jane, Chuck and Audrey, our dedicated and devoted staff, who have worked long and hard for you the membership, and for the Board.

Respectfully submitted,

Rodger Brown
President

The 2000 financial year at the Lyceum was another active year. We have tried to maintain this old building in excellent condition, pay down the loan of \$463,000, accomplish some Capital Expenditure projects and keep the dues reasonable for all our members. We have accomplished most of these goals by controlling expenses closely and keeping the cash balance to a minimum.

Here are the facts about financial year 1999 vs 2000 and 2000 BUDGET.

	INCOME			+/- To 1999
	1999	2000	BUDGET 2000	
Dues	145,700	145,400	151,000	-300
Initiation Fees/Assm.	7,900	23,000	18,100	+15,100
Member Rentals	24,800	25,300	24,000	+500
Non-Member Rentals	76,000	75,700	84,200	-300
Entertainment	27,400	12,300	21,200	-15,100
Director's Ball	500	400		-100
Pool Revenue	2,600	2,100	2,500	-500
Sports	11,200	2,400	1,400	-8,800
YED	17,000	11,000	19,000	-6,000
Dividends/Interest	30,200	33,500	28,800	+3,300
TOTAL INCOME	343,300	331,100	350,200	-12,200

- **DUES & INITIATION FEES**—Dues income was about the same, with \$1,600 still outstanding. Initiation fees were up considerably, with a number of new Glendale families joining. Hopefully this trend will continue. Every member needs to continually look for suitable prospective members and propose them.
- **RENTALS**
 - **Member Rentals**—are up slightly. Our facilities are being used extensively by our members. **52 Rentals**
 - **Non-Member Rentals**—were about the same as 1999 with **25 Rentals**
 - **Business Rentals (11 events)**—are a possible area where we can expand Rental Income in 2001. During 2000 our Business rental income was \$5,700. So, encourage your companies to investigate using the Lyceum for Business Meeting.
- **ENTERTAINMENT**—Income was down compared to 1999 because of the huge New Year's Eve party in 1999.
- **POOL**—Revenue was very close to 1999.
- **SPORTS**—2000 income was down compared to 1999 because of the generous donations by a few members to the 3rd Paddle Tennis courts.
- **YOUTH , EDUCATION & DRAMA**—Income was down due to lower Kid's Camp and D.O.M.attendance.
- **DIVIDENDS AND MISC. INCOME**—Was up 11% primarily due to higher P & G income.

Therefore, as a result of the above variation, the Lyceum **TOTAL INCOME** was **\$331,100** or **\$(12,200)** less than 1999.

OPERATING EXPENSES

	1999	2000	BUDGET 2000	+/- TO 1999
Rentals	10,000	11,800	9,200	+1,800
Entertainment	26,500	17,900	25,400	-8,600
Director's Ball & Lyceum Function	10,900	17,500	12,000	+6,600
Youth, Ed & Drama	15000	13,100	17,500	-1,900
Staff Wages & Fringes	89,300	100,200	88,200	+10,900
Taxes: Fed. & Real Estate	23800	32,800	27,000	+9,000
Insurance	4,000	4,900	4,000	+900
Utilities & Telephone	30,300	30,400	36,100	+100
Advertising, Mailing & Professional Fees	12,100	6,500	9,500	-5,600
House & Grounds	48,200	39,600	42,000	-8,600
Pool Guards & Pool Exp	25,300	25,500	32,100	+200
Sports	13,100	21,200	21,000	+8,100
Interest on Loan and Misc Exp	29,800	31,700	28,800	+1,900
TOTAL OP EXPENSES	338,300	353,100	352,800	+14,800

NET INCOME \$(22,000)

- RENTAL EXPENSES—rental costs were higher because consumables were up. These costs are all charged back to the renter and recovered by the Lyceum.
- ENTERTAINMENT EXPENSES—were down compared to 1999 due to lower New Year's Eve costs. The NET effect of Entertainment Committee Income less expenses is a cost of (\$5,600).
- DIRECTOR'S BALL & LYCEUM FUNCTIONS—Director's Ball was \$11,900, other expenses were Annual Meeting \$450, and the Lyceum logo shirts & jackets \$4,400. We will recover the LYCEUM LOGO clothing costs.
- YOUTH, EDUCATION & DRAMA—expenses were down in 2000 due to less Kid's Camp and DOM attendance. The NET cost of YED activities (Income minus expenses) was (\$2,200).
- STAFF WAGES & FRINGES—were up \$10,900 primarily due to overtime spent on Tennis Court problems before the new sprinkler system was installed, plus increases to the staff.
- FEDERAL & PROPERTY TAXES—were up \$9,000 vs 1999.
- INSURANCE—is up \$900 (23%) vs 1999.
- UTILITIES, TELEPHONE & CABLE—is about the same as 1999.
- ADVERTISING, MAILING AND PROFESSIONAL FEES—were down considerably in 2000.
- HOUSE & GROUND—expenses were about the same as 1999.
- POOL EXPENSES—are up very slightly over 1999.
- SPORTS EXPENSES—were \$8,100 above 1999, mainly due to paying the Tennis Pro for 2 years services during 2000, which was at his request.
- INTEREST EXPENSES—on our mortgage loan for remodeling was up \$2,800.

During 2000, the Board of Directors decided to sell 640 shares of Procter & Gamble stock for \$72,000. This sale was done on January 24, 2000 at \$113/share. These funds were used for Capital Expenditure projects in the amount of \$37,100 and Loan Payroll of \$33,100.00

The amount of Procter & Gamble stock that the Glendale Lyceum owned on 12/31/00 was 22790 shares with a value of \$1,706,401 vs value of \$2,567,049 on 12/31/99. This is a decrease in value of \$860,648.

Respectfully submitted,

W. D. Shardelow
Treasurer

SECRETARY'S REPORT

Membership

2000 has been an especially good year for increasing our membership base. We continue to be blessed with an influx of caring, talented, and interesting people to our club. Everyone who took the time, effort, and interest to seek out these new Lyceum members deserve a round of applause. Special thanks go out to Diane and Tom Todd, who were either primary sponsors or co-sponsors for so many of these newcomers that we lost count.

A new feature was instituted this year to make fulfilling the by-law requirement of introducing prospective members to the Board more flexible. To cope with the difficulty in scheduling dinners or cocktail parties in these times of multiple working family members, a social hour was made available prior to monthly board meetings. These are arranged by scheduling with the President or the Secretary.

Keep up the good work you did in 2000 in showing new Glendale residents our beautiful club and shepherding them through the enrollment process.

Membership summary

The Lyceum membership as of January 1, 2000 and December 21, 2000 was as follows:

With great sadness we note the deaths of the following Lyceum members during 2000.

Dick Cockerill Jo Ames Joyce Barrett

MEMBERSHIP CATEGORY										
	Senior	Sub-Sr	Retired	Honorary	Juitor	Sub-Jr	Minor	Out of town	Student	Total
Jan	271	1	60	48	57	32	94	31	3	597
Dec	282	1	62	52	60	39	84	30	2	613

AUDIT BY-LAWS AND CALENDAR REPORT

The new member families joining us last year were:

The Ames'
The Bakers's
Anne Burchenal
Susie Carruthers
The Chin's
The Crider's
The Crowley's
The D'Arcy's
The DiGiovanni's
The Klaus'
The Kreuzmann's
Elizabeth Kuresman
Angela Reed and T. J. Morehead
Phil Schrimper
The Terreblanche's

We also welcome back:

Cooper Burchenal
Donna and Pat Carruthers
Laura Dunlap
Joan Haydock
David Powell

Respectfully Submitted,

C. A. Poston
Secretary

Audit

The contents of the Safety Deposit Box were audited in early 2000 as required by the By-Laws. The contents were found to be in good order. Among the contents are the Club's Procter & Gamble stock certificate and archival data relating to the club's foundation and early history.

By-Laws

The By-Laws were amended in several areas during 2000; these changes will be reflected in a new issue of the By-Laws which will be published in early 2001.

Calendar

Large numbers of members and non-members alike enjoyed the recently renovated Lyceum facility during 2000. Rental of the facility, particularly by non-members, has become an important source of revenue for the Club; members were encouraged to secure data for their personal functions as early as possible. The Board looks forward to an increased number of weekday business rentals during 2001.

Respectfully submitted,

Angie Larimer
Chair: Audit, By-Laws and Calendar

ENTERTAINMENT REPORT

PAGE 15

Technically, the Entertainment Season for the Year 2000 kicked off with the still talked about high-tech New Millennium Eve extravaganza that had members celebrating into the year 2000.

The rest of the year, we stepped back in time. We went back to a time when families were the focus and participation was the key to success and fun. Creating memories to last a life time.

Our first annual Derby Day Members Garage Sale was a success to those who rented a table. Next year there will be additional advertising to take advantage of other annual sales that occur in the village that day. Mark your calendars and start gathering your stuff to be part of the bigger and better second annual Derby Day Garage Sale in 2001.

A Memorial Day Luau, an All American 4th of July and the timely Olympic theme for Labor Day marked the beginning, middle and end to the summer season. All were celebrated with our traditional family picnics that were well attended and enjoyed by all.

The TGIF grill was officially opened on the Friday before Memorial Day. The ingredients were simple, the price was right, no planning ahead required and good weather most Fridays was the recipe for an event that was more successful than our wildest dreams. Each week, guest chef's arrived to add their own side dishes, drinks of the day and style of cooking on the grill. Kids of all ages enjoyed the evening. Some only missed a week or two all summer. We are looking forward to the second season!

In August, the 1st Annual Lyceum Road Rally took off. The contestants were gone a little over an hour, but had stories to tell and laugh about that lasted well into the evening. The awards presented ranged from the best record to the most stuffed vehicle (hence the sardines). We are hoping to do this earlier in 2001.

The last party of the year took us back to when the committees prepared and served the food. This was the result of several "organizational meetings" which proved to be as much fun as the black-tie dance with gambling available to those who dared. What better way to spend New Year's

Eve—an elegant party close to home, with your friends and neighbors, with great food and entertainment.

Thanks to all who helped these events happen in 2000. You will be receiving an invitation to the exclusive Appreciation Party in February. We look forward to your support again next year, and hope that ALL of the membership will be invited to the Appreciation Party next year.

Respectfully submitted,

Bizzy Goldman

Chair: Entertainment

HOUSE AND GROUNDS REPORT

1. Arranged lawn care, trimming, leaf and snow removal
2. Brought kitchen to health code
3. Painted kitchen
4. Purchased TV/VCR combo for multi-purpose building
5. Purchased new PA system
6. Resurrected HVAC plan for 2001
7. Reseeded lawn
8. Arranged routine HVAC, plumbing, awning and electrical maintenance
9. Continued investigation into code requirements and costs for handicap access
10. Had safety railings manufactured and installed
11. Repaired baby pool deck
12. Patched and painted office
13. Rearranged library to accommodate Jane
14. Arranged various inspections-kitchen, backflow preventers, boiler and fire inspections
15. Designed and installed HVAC system in apartment
16. Pressure washed exterior of main building
17. Repaired damaged portico
18. Repaired awnings and posts
19. Coordinated tree removal and trimming
20. Installed new plumbing in apartment
21. Repaired MPB roof leaks
22. Ongoing maintenance of existing courts
23. Drama room cleanup
24. Squash hut utilized and cleaned up
25. Re-keyed all buildings
26. Disposed of remaining wood
27. Temporarily patched driveway
28. Installed door closers
29. Replaced and reconfigured dock door
30. Coordinated termite control
31. Relocated downspouts
32. Coordinated landscaping
33. Secured garage
34. Added cable outlets on stage, in library and tearoom
35. Repaired plumbing leaks in kitchen and apartment
36. Cleaned and prepared Omni courts

37. Replaced boiler pump
38. Acquired new picnic furniture
39. Added dedicated fax line
40. General safety, maintenance and security issues

PROPOSED PROJECTS FOR 2001

1. Main building HVAC upgrade
2. Patch, seal and stripe south side parking area
3. Handicap access
4. New refrigerators
5. Add parking for catering personnel and band as lot boundaries permit
6. Acquire and install new security/entry system in MPB
7. Install TV dish system in MPB
8. Waterproof main building and MPB
9. Add a concrete deck down by the pool
10. Investigate corner slab jacking
11. Upgrade dock with ramp.
12. Add door stops
13. New golf cart
14. Landscaping
15. Add utility sink.
16. Upgrade outside water spigots
17. Bid and replace main ballroom soundproofing
18. Improve gravel drive and walkways around paddle courts
19. Table/chair storage issues
20. Continue termite control
21. General safety, maintenance and security issues

FUTURE PLANS

1. Repair sinking corner, portico and office
2. Table and chair storage on first floor
3. Sump pump replacement
4. Basement upgrade
5. Trench drains for patio
6. Replacement windows

Many thanks to Chuck Sanders, Judy Hummer, Jane Jackson, Audrey Weber and Jackie Vaughn on behalf of the Lyceum. Their dedication and hard work keep things running. And a special thanks to those who consistently volunteer their time and effort in our interest.

Respectfully submitted,

Yr fhfl and hmbl srvnt,

Rick Spaulding
Chair: House and Grounds

POOL REPORT

This is my third and final year as pool chairwoman. I have enjoyed my job and will miss working with my fellow directors and the people who are responsible for making sure the pool runs smoothly. This year, the summer started uneventfully, but ended with a BANG!—literally—when the pool motor blew up on Labor Day. Fortunately, our membership was understanding and all will be repaired before next season opens.

Improvements to the pool this year included new white wicker porch furniture, some new umbrellas and three large floral planters.

Some of you may have noticed our swim team—The Glendale Piranhas—is no more. Unfortunately, we did not have the necessary numbers to keep the team competitive in the Northern Suburban Swim League. If at any time the membership would like to try forming a swim team, please contact me or the current pool chairperson. We would love to see our piranhas swim again.

A big thank you to Jane Jackson and our lifeguard crew for the able handling of big and little problems this summer. Our guards this past summer were:

Crystal McWhorter—a senior at University of Tennessee

Sarah Pokrin—a freshman at University of Tennessee

J.D. Warden—a senior at Cincinnati State Technical College

Emily Frishkorn—a junior at University of Cincinnati

Katie Nell—a junior at Princeton High School

Our guards do so much more than guard the pool. They give swim lessons, provide first aid, take messages and generally entertain our membership. Thanks for another great summer.

The success of the Friday Night cookout contributed to increased pool

usage. I hope our membership continues to support this fun and relaxing event. It was a real winner! Also, I want to extend a thank you to Steve and Heather Geary for organizing the Polar Dip. As always, Jane and I welcome suggestions for improvements.

It has been my pleasure to serve the membership for the past three years. I learned a lot, made many new friends and have good memories of my years as a Lyceum Director. Thank you to everyone who assisted with the smooth operation of the pool — the Lyceum Staff—Judy, Chuck, Audrey, Jackie and especially Jane. I'll miss you.

Respectfully submitted,

Carol Faulkner

Chair: Pool

SPORTS REPORT

The past two years, this report has focused primarily on the statistics of membership sports participation. The numbers were good again and some will be briefly summarized below. But this year it seem appropriate to concentrate on reviewing the state of our facilities.

Over the past three years, we have upgraded the paddle tennis program with the addition of heaters for all courts to aid with snow and ice removal, we have added a third court to make a much better location for tournaments and league play (league competition almost always schedules three matches at a time, so that without a third court, delays and scheduling complications are inevitable), and we have rebuilt the bottom wire screen attachments of the two older courts to prolong the screen life for several more years. We have also equipped all courts with new, better, brighter lights which actually use less power and so should pay for themselves in several years.

These changes, along with the multipurpose building built a few years ago when the Lyceum accomplished its major rebuilding, mean that we have a first-rate paddle complex, which compares well with any others in this area.

Other than routine maintenance, the only major expense likely to be needed in the near future is the replacement of the wire screens—probably within the next five years.

Moving on to tennis, as noted in the last two annual reports, the principal problem has been an obsolete sprinkler system, which provided uneven water distribution, missing some areas entirely and over-watering others. Since proper moisture is the most important single element in court maintenance, we have been living with sub par playing surfaces for several years. Last summer we installed a new system with more sprinkler heads for better coverage. We now also have the flexibility to

water some courts while play is continuing on others. This means that we can add a second treatment during very hot weather without closing the whole facility. The new system was installed in mid-summer after the time of heaviest use, and it still needs a little fine tuning for optimal coverage patterns. However, we look forward to a greatly improved court condition this coming season.

New wind screen were also installed last year. The previous season we got by with remnants of our old screens and additional sections salvaged from Queen City Racquet Club when they replaced their screens. This patchwork had become pretty shabby and needed to be replaced.

Finally, this coming season we will be contracting daily court maintenance with an outside firm. We believe this will not only result in better use of our internal staff, reduced temporary help and overtime wages, but will also result in further improvement to the playing condition of our courts.

All in all, we believe things are in excellent order for the coming years. However, the old roller is shot and we need to purchase a new one before the season starts.

Now the for activities. We held three tournaments:

Paddle Tennis Club Championships

Tennis Club Championships

Senior Men's Invitational (a sanctioned event)

- Sixty senior members participated in the Club Tennis Tournament.
- We fielded 5 league paddle tennis teams
- There were 2 junior tennis teams
- There were 3 league tennis teams
- A summer evening men's tennis program was started one day each

week, partially to replace the former B Men's Team, which has not been active the past two years.

In closing, I would like to thank those volunteers who ran tournaments, captained league teams, and organized the men's evening tennis: Michael and Ashley Todd, Paul Breidenbach, Lou Brockmeier, Albert Slap, Pam Sawyer, Mary Ann Montgomery, Beth Ecker, Jane Jackson, Janet and Andy Todd, Rich Reilly, Bob Kooris, Scott Brinker and Ron Visscher.

Respectfully submitted,

Joe Green

Chair: Sports

YOUTH, EDUCATION AND DRAMA REPORT

PAGE 25

YOUTH

Swimming, tennis, crafts and all sorts of activities kept campers and counselors busy this summer during five weeks of Kid's Camp. We will return to six weeks of Kid's Camp this summer, so watch the Forum for information on signing up. Breakfast with Santa and the Easter Egg Hunt were successes, thanks to the wonderful committees who assisted with both events.

EDUCATION

The Lyceum Book Club, organized by the enthusiastic Linda D'Amato, met monthly throughout the year, and discussed a wide variety of books. While the discussion groups may have been small from time to time, the discussions themselves were lively and thought-provoking. Check the Forum for details about upcoming Book Club meetings in 2001.

From Swing dancing to German songs, The Dinners of the Month, with the able assistance of Chuck and Carol Poston, were both entertaining and educational! The very successful summer TGIF get-togethers took the place of Dinners of the Month during the summer.

Friends of the Arts were not active this past year, but those who are interested in planning a trip to the symphony, art museum, or other such events are encouraged to contact Jane or Candi in the coming year.

DRAMA

The Lyceum Drama Club, headed by the tireless Bizzy Goldman, accepted the challenge this year of producing a major musical. The result was "Carnival," directed by Jackie Knapp, which was not only a smashing box-office success, but a wonderful opportunity for Lyceum members of all ages to showcase their singing, acting and backstage talents!

Just before the holidays, we were treated to the off-Broadway debut of "Christmas With Anton," written by our very own Joe D'Amato, and directed by Betty Kooris.

Look for another exciting Drama Club production ("Plaza Suite") in March 2001.

SPECIAL THANKS

Special thanks to Jane Jackson for her roll in planning and organizing the many YED activities that the Lyceum offers and Judy Hummer for her help in seeing that things run smoothly!

Respectfully submitted,

Candi Caress

Chair: Youth, Education and Drama