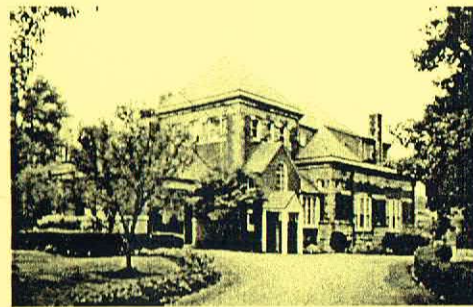


**THE GLENDALE LYCEUM  
ANNUAL REPORT**



**2001**

**The 2001  
Board of Directors**

<b>President</b>	Rick Spaulding
<b>1st Vice President and ABC</b>	Rodger Brown
<b>2nd Vice President and Secretary</b>	Chuck Poston
<b>Treasurer</b>	Angie Larimer
<b>Entertainment</b>	Bizzy Goldman
<b>House and Grounds</b>	John Schiff
<b>Pool</b>	Jim Wesselman
<b>Sports</b>	Michael Todd
<b>Youth Education and Drama</b>	Candi Caress

This booklet was prepared for the use of the Glendale Lyceum Membership only.

©January 2002  
The Glendale Lyceum  
865 Congress Avenue  
Glendale, Ohio 45246  
513-771-8383

# President's Report

I went back through some Ramblings I presented this past year to get a feel for what was accomplished in 2001. Without tooting the horn too much, I believe we lived up to our promises and met, or even exceeded, our goals and objectives for the year. We convened a strong, committed Board. We had open communication with membership. In these difficult financial times we managed with fiscal responsibility. Chuck Sanders gets the MVP Award for being a superb facilities manager and kept the place safe and secure. And while we didn't get all the capital improvements we desired (see fiscal responsibility), we did manage to finally upgrade an antiquated HVAC system, thanks to your kind generosity. It is already beginning to pay for itself.

So let's review the list:

Upgraded Forum (Thanks Jane!)

Great Kid's Camp

TGI Fridays at the pool

The Drama Club is on fire

The Book Club is a regular

Dinners-of-the-Month

Member Appreciation Party

New dedicated fax line

New tractor

The pool was outstanding

Temporary fixes to the driveway

New internet site that has already resulted in a booking

HVAC upgrade

Boiler and asbestos removal

Zoned temperature controls

The Paddle season, a pro and superior courts

The Tennis program and superior courts

The garage sale

A special New Year's Eve

Mardi Gras at the Director's Ball

Partial renovation of the MPB

## Table of Contents

The 2001 Board of Directors	3
Table of Contents	4
President's Report	5
Treasurer's Report	6
Secretary's Report	10
Audit, By-Law and Calendar Report	11
Entertainment Report	12
House and Grounds Report	13
Pool Report	14
Sports Report	15
Youth, Education and Drama Report	17

I hope you will agree it was a productive and fun year. And hearty thanks go out to the staff, Judy, Chuck, Jane, Audrey and Jackie who all went beyond the call to see it so. Thanks to the Board, and especially to a very special membership. I'm proud to call myself one of the Lyceum Family.

Yours very sincerely

Rick Spaulding

President

# Treasurer's Report

Treasurer's Report continued

The Glendale Lyceum				
Comparative Statement of Profit and Loss				
Cash Flow				
For the years ending 12/31/2000 and 12/31/2001				
INCOME	2000	2001	+/- 2000	
Dues	145,500	155,600	10,200	
Initiation fees	22,500	16,600	-5,900	
Assessment -HVAC	0.00	46,100	46,100	
<b>Rentals:</b>				
Member	19,600	24,000		
Non-Member	75,700	86,500		
Business	5,800	4,300	101,100	114,800
Entertainment	12,300	16,000	3,700	
Director's Ball	400	600	200	
Pool	2,100	1,800	-300	
Sports	2,400	4,100	1,700	
YED	11,000	12,200	1,200	
Miscellaneous	2,300	2,000	-300	
Interest/Dividends	31,600	32,700	1,100	
<b>Total Income</b>	<b>331,100</b>	<b>402,500</b>	<b>71,400</b>	

EXPENSES	2000	2001	+/- 2000	
<b>Rentals</b>				
Member	4,700	4,000		
Non-Member	7,200	4,250		
Business	0	50	11,900	8,300
Entertainment	17,900	14,300	-3,600	
Director's Ball	11,900	10,900	-1,000	
Lyceum Function	5,600	900	-4,700	
YED	11,800	11,200	-600	
Wages, fringes	118,000	115,500	-2,500	
<b>Taxes</b>				
Federal Income	11,200	0		
Property	21,600	32,800	22,000	22,000
Insurance	4,900	4,900	0	
Utilities, Phone	30,400	32,400	2,000	
Administration	5,500	6,600	1,100	
Professional Fees	1,000	1,150	150	
House/Grounds	41,000	35,350	-5,650	
Pool/Guards	8,700	11,100	2,400	
Sports	28,500	31,300	2,800	
Interest	36,500	25,900	-10,600	
Capital Expenses		44,000	44,000	
Miscellaneous	100	9,200	9,100	
<b>Total Expenses</b>	<b>366,500</b>	<b>385,000</b>	<b>18,500</b>	
<b>Net Income/(Loss)</b>	<b>-35,400</b>	<b>17,500</b>	<b>52,900</b>	

## Glendale Lyceum Annual Report

2001

No longer is there such thing as a slow year at the Lyceum and 2001 was no exception. We took good care of "this old house" and had a good time along the way, while at the same time carefully shepherding our resources.

### HISTORY:

The Club was founded in 1852 by Robert Clark (we're 150 years old in 2002!) and endowed with P&G stock, the dividends from which have helped to defray the Club's operating expenses over the years. While we have been forced to sell a small number of shares in recent years to fund essential capital improvements, our goal is always to retain these assets for future generations of Club members.

### OVERVIEW of P+L:

During 2001, total income increased over the prior year by some \$63,000, of which \$46,000 was contributed by Club members for the HVAC project. Very special thanks go to those who gave even more than the assessed amount. Included in this increase was income from overall Facility Rentals, up 13%, in spite of a dip in business rentals, and from Dues, with thanks to the new members we welcomed during 2000. Initiation fees were down slightly over the prior year and thus, we repeat our request that **every member look continuously for suitable new members** and invite them to join us.

P&G raised their dividend during 2001 and consequently our dividend income rose in spite of the fact that we sold stock during last year. This is very welcome news.

Expenses were lower than in the previous year by 7%, even after removing the HVAC replacement from the equation. The largest savings, for taxes and interest, amounted to some \$20,000 dollars. We expect to not owe any income taxes for 2001 since depreciation expense will decrease our taxable income to less than zero. With huge thanks to my predecessor, Duff Shardelow, who spearheaded the renegotiation of our outstanding loan, we saved \$10,600 dollars in interest expense over the prior year

### PLANS FOR 2002:

Business rentals, a relatively new area for us, will be an area of special emphasis during the present fiscal year. There are very few expenses or wear and tear on the

facility associated with these rentals. **Please mention the Lyceum to your friends and business associates.** Renters are enthusiastic about our lovely facility for their retreats and other away-from-the-workplace events.

We have a long wish list of capital projects for 2002; one of them has already been completed. The pump which moves wastewater from the lower level to the street level had to be replaced and the contractor completed this work last week. We saw this project coming in the late fall, and were fortunate to have been able to complete it before an emergency arose.

Also on our to-do list is structural work on the northeast corner of the main building, an upgrade for the tennis court sprinklers, new refrigerators for the kitchen, much-needed repairs and sealing of the parking lot, handicap access ramps and repairs to the garage roof, hit by a tree during a recent storm, to name a few.

Finances permitting, my larger goal is to establish and contribute to a Capital Replacement account, in which we would hold funds for future large repairs and replacements, rather than having to assess our members in an emergency.

### THANKS:

In addition to the gratitude I have already expressed, I want to thank my fellow Board Members for their response to my pleas to keep their expenses to a minimum. The story of their hard work and diligence is told in this year's bottom line.

Our employees deserve a huge pat on the back for their extraordinary efforts on our behalf. And, I've saved the most important thanks until last – for you, our members. You give of your time, your talents and your dues and assessments with unprecedented grace and spirit and the Board is deeply grateful for all that you do to support our Club. See you at the Member's Appreciation party in February, when we welcome the opportunity to thank each of you who have personally made 2001 a landmark year.

Respectfully submitted,

Angie Larimer  
Treasurer

# Secretary's Report

This year, 2001, presented us with many challenges, and as usual, you the membership stepped up and met them with you normal enthusiasm and energy. As a result, a number of new member families were introduced into the club. This was offset somewhat by members who left us due to relocation and other circumstances. Additionally, the death of six of our members was an especially hard loss.

We continued with the program of scheduling an informal get-together prior to our monthly Board meetings as a means of introducing potential new members. While this has proved to be a popular approach, we would like to encourage those of you who are proposing new members to not completely abandon the traditional method, which is to host a cocktail or dinner party as a means of introduction. The warmth and intimacy of your home lends a special feeling to these occasions.

As usual, you are encouraged to bring your new neighbors to a function at the lyceum to let them see what a wonderful club we have. You can also refer interested parties to our new web site at [www.glendalelyceum.com](http://www.glendalelyceum.com).

## MEMBERSHIP SUMMARY

The Lyceum membership as of January 1, 2001 and December 31, 2001 was as follows:

	Senior	Sub Sr	Retired	Honorary	Junior	Sub-Jr	Minor	Out of Town	Student	Total
Jan	280	1	62	52	60	39	84	30	2	610
Dec	268	1	62	57	62	34	70	33	2	589

Once again, we must sadly note the passing of several of our members in 2001. Our prayers are with them and their families. Gone are:

Ted Carman  
 Ruth Gardner  
 Virginia Halbauer  
 Daphne Keys  
 Jack Lower  
 Louisa Woods

New member families in 2001 were:

The Burnham's  
 Thomas Gilliam  
 Lynda Groh and Thad Karbowsky  
 The Vickers's

Respectfully submitted:  
 C. A. Poston, Secretary

# Audit, By-Law and Calendar Report

## AUDIT:

The contents of the Safety Deposit Box were audited on January 15, 2002. The contents were found to be in order. Among the contents are the club's original copy of the Constitution of the Glendale Lyceum (1883), other letters, certificates and documents pertaining to the early history and founding of the Glendale Lyceum and original Procter & Gamble stock certificates.

## BY-LAWS:

At a By-Laws Committee meeting on March 10, 2001, various by-laws changes, mostly minor wording, were proposed and later adopted by the full Board of Directors at the March meeting. These updated by-laws are now in the Member Handbook which is available to all members.

## CALENDAR:

During the past year, member and non-member rental and activity continued to be an important source of club income. The Board looks forward to increasing our weekday business rentals during 2002.

This annual meeting concludes my term as a Board member. It has been my sincere honor to have served the membership during my term.

Respectfully submitted,

Rodger Brown  
 Chair: Audit, By-Laws and Calendar

# Entertainment Report

The New Year was rung in at the Lyceum with an elegant Black-Tie evening of gambling. The ballroom was converted into a casino with delicious food prepared by the committee and topped off with champagne toasts at midnight. This was a party that is still being talked about!

The exclusive Appreciation Party in February was a HUGE success. Not only was it nice to have a chance to thank all of the volunteering members for their hard work, we had a lot of committee positions filled for the planned activities for the rest of the year. This made my job easier!

We had record-breaking crowds at the family picnics. Memorial Day was a "red, white and blue" event with over 200 attendees!...The fourth of July was what has become a traditional BBQ complete with all the trimmings and a better than every fireworks display. For Labor Day, we tried something new—a "Pot-Luck Picnic". We had a cookout of various meats and had the attendees bring the side dishes. The response was GREAT.

The second annual Derby Day Members Garage Sale had an increase in participants and a bigger buying crowd than the previous year. Mark your calendars and start gathering your stuff now to be a part of an even bigger and better third annual sale.

The TGIF grill started up where it left off last season. The weather cooperated on most Friday nights; the crowds were big, the "Chef's of the Week" with their unique cooking style, choice of cocktails and side dishes made each week a different experience. It is a wonderful sight to see so many people of all ages enjoying the facilities we have here.

We tried a few events that did not pan out due to limited participation. Our ideas were a Keenland Road Trip, the second annual Road Rally, Saturday nights at the movies in the fall, and a Casino outing.

We are always looking for ideas and input to have activities that the members want. We would not be able to do any of these events without the member participation. We are looking forward to our second Appreciation Party in February 2002, and I am happy to report that the invitation list is longer than last year's! Thank You!

Respectfully submitted,

Bizzy Goldman  
Chair: Entertainment

# House and Grounds Report

It is the little things that sometimes go unnoticed around our Lyceum. The parts we notice the most would be our staff: Chuck, Judy, Audrey, Jackie and of course Jane. They are the ones truly serving our membership.

I am pleased that we are now in comfort; in any season, with the new air handling units installed. Next, we will be able to flush with confidence once the new sewage extractor is on-line.

Rather than listing all of the mundane maintenance, which Chuck works with or is contracted out, the Lyceum is still here. The tradition of excuses and band-aids are no longer an appropriate solution for our club; on with next year.

Respectfully submitted,

John Schiff  
Chair: House and Grounds

# Pool Report

As pool chairman, it was my pleasure to oversee the operations of the Glendale Lyceum pool, which is now 6 years old.

The overall condition of both the main pool and the baby pool is quite good, as are the mechanicals that support both pools. In 2001, we had a chemical control system installed that maintains the proper chemical balance in the baby pool. Also, a connection was made between the main pool and the baby pool that now allows us to fill the baby pool directly from the main pool. Why is this important? Because there are those occasions where the baby pool needs to be emptied due to contamination. The baby pool can now be refilled quickly and with chemically treated water directly from the big pool, saving us downtime and pool chemical costs.

In 2001, we needed to have the walls of the pool acid washed because the marcite becomes more porous with age. There is a good chance that this will have to be done again in 2002.

From a safety standpoint, 2001, was a very good year. There were a few minor injuries, but none that could not be handled by first aid from the lifeguards. Our group of lifeguards did a fine job in maintaining pool safety. We have five full-time lifeguards, and four of them have expressed an interest in returning in 2002. We are also hopeful that the fifth one will consider returning in order to maintain continuity. The Lyceum pool is a wonderful asset for the membership and because of the design of the pool, the pool house and the furniture, it is a beautiful place to spend a sunny afternoon and I am hopeful that more of the members take advantage of it.

In closing, I would like to thank Jim Kathmann for giving us a wonderful deal on teak furniture that we now have at the pool. I would also like to thank John and Caroline Schiff for their donations of pool umbrellas and some planters. A big thanks goes to Jane Jackson, without whom I would have floundered in my first year as pool chairman.

Respectfully submitted,

Jim Wesselman  
Chair: Pool

# Sports Report

Lyceum Sports hit the ground running on quality playing facilities this year due in large part to the hard work of my predecessor, Joe Green.

Over the course of the last four years, the paddle tennis courts had undergone major renovation resulting in one of the City's, if not the region's, best paddle complexes. Due to these past efforts, the courts required only routine maintenance this year to preserve the quality of the equipment. We do not anticipate any other major expenses, other than for continued maintenance, for the paddle tennis courts in the upcoming year.

As many of you are aware, the Lyceum installed a new sprinkler on the tennis courts last year which was designed to provide better coverage. In addition, we hired Ron Glazer to perform the daily court maintenance and to oversee the operation of the new sprinkler system. With Ron's guidance, the new system improved the overall quality of the playing surface. Notwithstanding the general improvement, it became evident that the new system is unable to provide optimal coverage for the entire facility. To remedy this shortcoming, we will purchase additional sprinkler heads and a new water pump which will allow for more complete coverage, as well as twice-daily watering.

Ron also assisted in upgrading the quality of the Omni-Courts this year. After brushing, rolling and removing close to a tone of extra sand, the courts were returned to their former glory and saw a considerable increase in use from past years.

As for membership participation, not only were the members out there playing, they organized and ran a lot of great events and successful league play. The tennis season opened with the "Memorial Day Tennis Tune-Up" event hosted by Ted Plattenburg. The annual Fourth of July Club Championship was skillfully skippered through lots of wet weather by Craig Simonson and Albert Slap. The Senior Men's Invitational in July brought a high level of tennis to our courts. Without Lou Brockmeier's efforts, this tournament would not have been possible. Through the season, we fielded three tennis league teams, led by team captains Mary Ann Montgomery, Beth Ecker and Ron Visscher. We ended the year with the "Labor Day Family Tennis" event hosted by the Will Sawyers and the Stengel's.

On the paddle courts, we closed last season with the Paddle Tennis Championship Tournament, hosted by my wife Ashley, Ed and Pam Sawyer, Wendy and Joe Voss and Ted and Eva Plattenburg. For this year's paddle season opener, we sought to recruit new players and to raise the level of play by holding three weekend paddle clinics run by Paddle Tennis Pro, Nancy Budde. Nancy has continued to provide weekly clinics for the women's teams. In addition, the ladies' teams have hosted one TGIF, with more in the making. Finally, we again have five league paddle tennis teams, led by team captains Pam Sawyer, Jane Jackson, Rich



Sports Report Continued...

Reilly, Bob Kooris and Joe Green.

I want to personally thank all of these individuals for their hard work. I would also like to thank the Lyceum Staff, Jane, Chuck and Judy, for the day-to-day assistance which affords the members the chance to play.

Respectfully submitted,

Michael U. Todd  
Chair: Sports

# Youth, Education and Drama Report

## YOUTH

Approximately 50 different campers (25-30 per week) and 20 counselors participated in six weeks of Kid's Camp this summer. What a great way to involve 70 Lyceum members in swimming, tennis, crafts and other fun activities!

The Annual Easter Egg Hunt and Breakfast with Santa were well-attended and much enjoyed by young and older alike, thanks to the efforts of the respective committees.

## EDUCATION

The Lyceum Book Club continued to meet on the first Wednesdays of the month (meetings were at the pool in the summer months!). Members read and discussed a wide variety of books. The highlight was an evening with author Ron Ellis, who discussed very candidly the entire process involved in writing his book, *Cogan's Woods*, a moving story of a son's relationship with his father while hunting in the woods of Northern Kentucky.

Dinners of the Month attracted members to dinner and either a speaker of entertainment on the third Thursdays of the month (except in the summer months, when TGIF took over!). In February, the Member Appreciation Party took the place of DOM, and all members who had volunteered to help out with an activity in the preceding year were invited. Were thanked, and were asked to sign up for more activities.

## DRAMA

In the Spring of 2001 the Lyceum Dramatic Club presented two acts from the ever-popular play, "Plaza Suite," under the able direction of Jackie Knapp. Great performances by all!!

The Dramatic Club established a new Board of Directors in June 2001: Myrna Stuart (President); Joe D'Amato (Vice President); Glenna Knapp (Secretary); Lisa Spaulding (Treasurer); and board members Paul Breidenbach, Lou Brockmeier, Anne Elkins Didrichsen, Nancy Green, Ron Jones, and Anne Viall.

The Dramatic Club Board has developed goals for the growth of the club, which include more involvement of children; improvement of the Lyceum facilities, presenting a variety of programs; and encouraging more members to audition and to direct.

At the September Dinner of the Month, the Dramatic Club performed excerpts from four of the most recent productions. A narrative presenting a common theme of the shows was written by Myrna Stuart and the performances were directed by Joe D'Amato.

Auditions were held in December, 2001 for the March 2002 production of "Life with Father." This play was chosen because it includes children and presents a nostalgic look at family values in America. The play has been cast with eight

Youth, Education and Drama Report Continued...

adults and eight children and rehearsals have begun.

**SPECIAL THANKS**

Again, many thanks and kudos to Jane Jackson for her organizational skills, and to Judy Hummer for helping things run smoothly, and to Chuck for supplying the manpower needed on occasion!

Respectfully submitted,

Candi Caress

Chair: Youth, Education and Drama